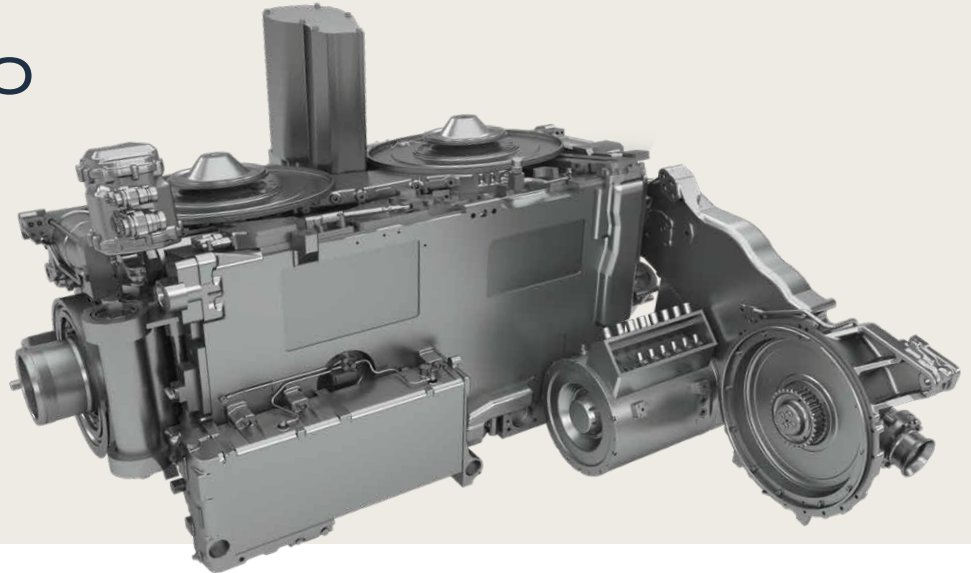


MILITARY VEHICLES TRANSMISSIONS

HSWL 295 EVO

- / Weight class
50-70 t
- / Power range
800-1,200 kW
- / **M82 Electric motor generator** for hybrid capability



The HSWL 295 EVO is the transmission of choice for Main Battle Tank platforms. Featuring the latest developments within its class, this modern, proven, high performing transmission offers extraordinary reliability for mission and crew assurance and meets all the requirements of modern combat vehicles, complete with hybrid technology, drive-by-wire capability, excellent brake performance, digital control and mechanical emergency gear shift system.

The system features the M82 electric motor generator, providing additional mobility and power generation capabilities to the vehicle platform.



**Magnet Motor M82
Electric Motor Generator**

HSWL 295 Reference Vehicles

- MBT LECLERC Tropicalisé – UAE
- Armoured Recovery Vehicle LECLERC REC – France
- MBT K2 – Republic of Korea
- MBT CHALLENGER 2E (Demo) – U.K.
- MBT ALTAY – Turkey
- MBT M1 ABRAMS (Demo) – U.S.A.
- MBT LEOPARD 2 (Demo) – Germany

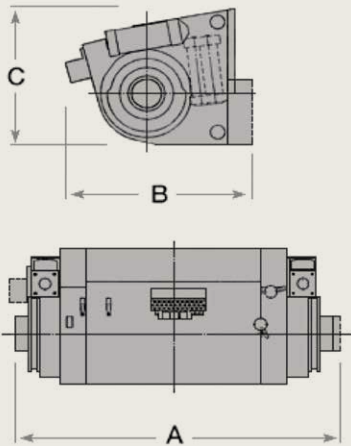
HSWL 295 EVO

Features

- Fully integrated M82 electric motor generator
- Up to 1200 kW combined boost capability in every operation scenario
- Direction of output shaft rotation forward/reverse is freely selectable
- Front or rear vehicle installation
- Typical for rear vehicle installation in U-configuration
- Manual and fully automatic power shifting with electrical remote control
- Mechanical emergency gear shift system
- Torque converter with automatic lock-up clutch
- Infinitely variable hydrostatic/hydrodynamic superimposed steering system
- Pivot turn and neutral turn around the vertical vehicle axis at infinitely variable speed
- Hydrodynamic/mechanical dual circuit integrated brake system
- Secondary side heavy duty retarder for service brake and sustained braking action
- Service and parking brake
- Power-take-off
- Engine can be started by towing the vehicle

Technical Information (dependent on variant)

Dimensions (AxBxC)	1,800 x 774 x 840 mm
Maximum engine power	1,200 kW (1,600 HP)
Vehicle weight, typical	50-70 t
Power shift transmission	5 speed forward, 5 speed reverse
Overall ratio, mechanical	6.2
Stall torque ratio	2.5
Transmission weight (dry)	2,450 kg
Brake system	Fully integrated, high performance
Steering system	Integrated, high maneuverability



Trusted Partner.

RENK America
76 S. Getty Street
Muskegon, MI 49442, USA
P +1 (231) 726.8429
E Andrea.Peacock@renk-america.com
www.renk-america.com

Data, including specifications, contained within this document are summary in nature and subject to change at any time without notice of RENK Americas' discretion. Call for latest revision. All brand names and product names referenced are trademarks, registered trademarks, or trade names of their respective holders. This document consists of general capabilities information that is not defined as controlled technical data under ITAR Part 120.10 or EAR Part 772.
© 2024 RENK America

More information
<https://share.renk.com/military-vehicles>

